

# Emerald Cultural Institute



emerald<sup>®</sup>  
cultural institute

Experience Tradition, Embrace Innovation



# Contents

More than a language school	2
An investment in the future	4
Key features of all our programmes	7
Integrated Language Learning	8

## OUR PROGRAMMES

General Courses	10
Intensive Plus Courses	12
Examination Courses	14
Academic Year Programmes	16
Specialised and Business Courses	20
Internship Programme	23
Courses for Teachers	24

## YOUR EXPERIENCE

The Dublin Centres:	
Palmerston Park	28
Merrion Square	32
Gallery	36
Accommodation	42
General Information	46
Location	47

# Emerald Cultural Institute, More than a language school

---

The Emerald Cultural Institute has over 30 years of experience providing quality English language and professional development programmes to groups and individuals of all ages and from more than 60 different countries.

We have developed a sophisticated range of courses to meet our students' needs and students can choose whichever one of our campuses best suits their learning requirements.



A perfect environment  
for language learning.

# 30

Over thirty years of experience in providing quality language, professional development and cultural programmes.



**Locations:**

Our spacious campuses provide our students with the perfect environment for language learning. All of our centres are in prime locations of Dublin, either in beautiful residential areas or in the heart of the city.

**Personal attention:**

Every aspect of the study-abroad programme is important to us, and our dedicated team of teachers, Directors of Studies, accommodation and student welfare officers are committed to delivering the highest quality services and support to each student.

**Excellence in teaching:**

Students of all levels benefit from interesting and challenging lessons delivered by highly qualified and experienced teachers. All of our courses provide 60-minute lessons giving maximum teacher contact time.

**Maximising progress:**

Monitoring progress, continuous evaluation and feedback from clients are an integral part of maintaining quality and ensuring that all our students continuously learn and improve.

**Facilities:**

Our centres are equipped with excellent facilities to enhance the learning experience of every student.

**Quality:**

Quality is at the centre of the Emerald Experience and we are members of IALC and Quality English, accredited by EAQUALS and recognised by Quality and Qualifications Ireland for English Language Teaching.

**Accommodation options:**

We offer students a choice of excellent accommodation alternatives within easy reach of all our campuses.

**Free time:**

We provide students with an opportunity to participate in a lively and varied social and cultural programme.

**Breakout and relaxation areas:**

Our campuses offer either coffee or canteen facilities and lounge areas for students to avail of during their free time.

**Academic Mentoring System:**

We operate a mentoring system with tutors assigned to long-term students for the duration of their stay.

**Online services:**

Students have access to “Write On” our online student magazine and the Emerald Life App which provides essential information about our students’ academic and daily life.

# Emerald Cultural Institute, An investment in the future

---

Our students come from a wide variety of different cultural backgrounds and age-groups. Whether they need English for work, study or travel, our aim is to help them achieve their academic goals during their time with us.

The academic staff work closely with students to develop a clear study plan based on their language level and learning objectives. Throughout the programme students' progress is closely monitored by their class teachers and by the Director of Studies.

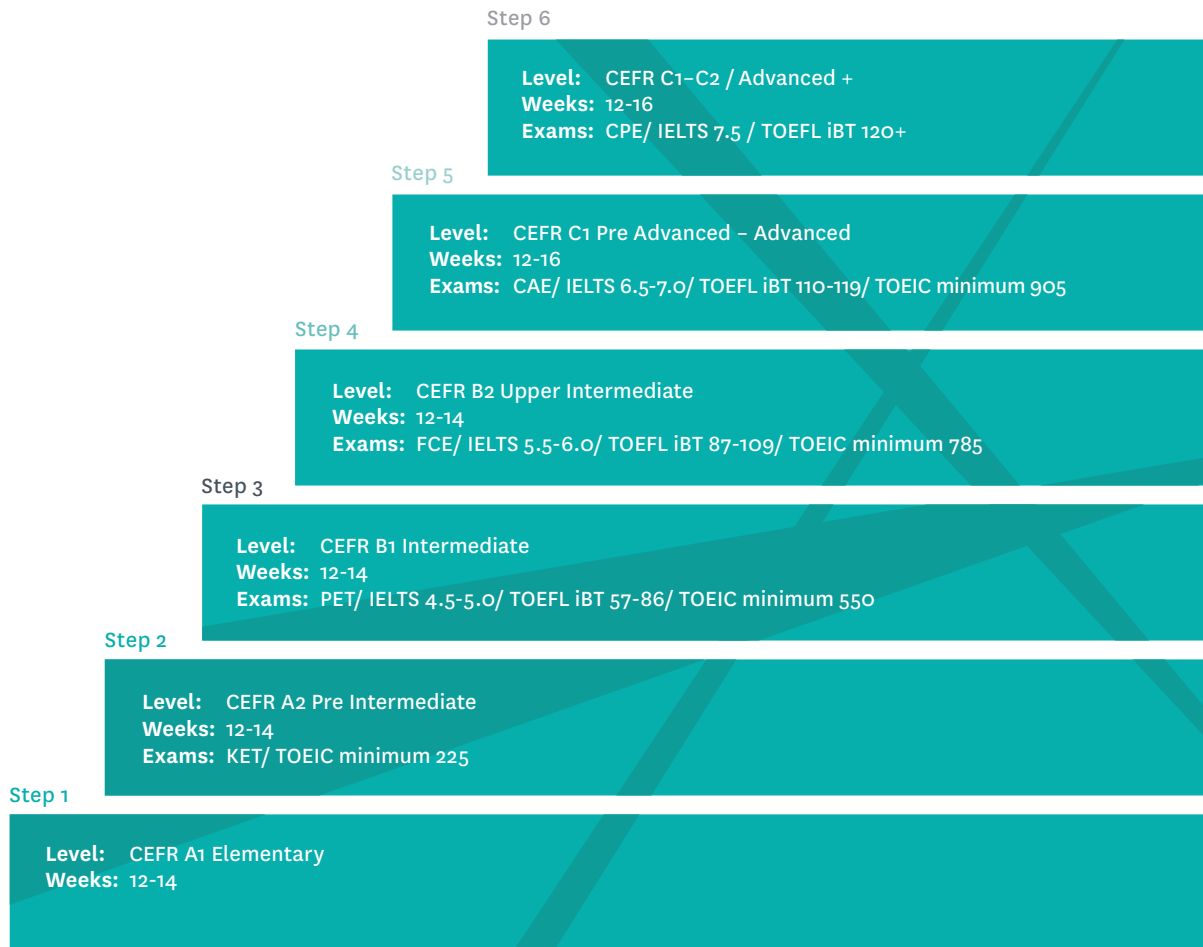
## Personal Study Path

Students can choose from a wide range of courses including general English, examination preparation, business English and internship programmes.

All students have a written and oral placement test on arrival. Once they are placed in the appropriate level our teachers and academic team support each student during the programme to monitor progress. We use the Common European Framework of Reference for Languages (CEFR ) to assess each student's level and the personalised study path indicates their expected progress.



# Your Emerald Study Path



A student's progress is dependent on a number of factors including attendance, ability, motivation, and the length and type of programme.





Welcome kit with maps and student handbook with a rich and varied social programme



Free supervised study sessions in the afternoons







## Key Features of all our Programmes

Exclusive Emerald-designed Integrated Language Learning

60-minute lessons

Written and oral assessment tests

Ongoing Academic support and monitoring

Use of Multi-media facilities

Free supervised study sessions in the afternoons

Regular Progress Reports

Study Plans designed with Academic Mentors for long-term students

Free Programme of Workshops and Seminars

Interesting and stimulating course materials

Rich and Varied Social Programme

Welcome Kit with maps and student handbook

Recognised Test Centre for TOEIC, TIE, Trinity Examinations and Oxford Test of English

Cambridge Examination Venue and Preparation Centre for Cambridge and IELTS examinations

Course Diploma with student report



Use of multi-media facilities and regular progress reports

# Integrated Language Learning

21st Century Learning & Modern Communicative Teaching

---

Imagine that in your English class you could also learn about topics that will help you in your professional life. Then imagine that the foundation for these classes was practising the 21st Century Skills essential to your future.

This is what happens in our Integrated Language Learning Programme. We have taken these 21st Century Skills as the foundation for our content-led lessons and workshops on important professional development topics. All of this is taught with and through English.



“The new programme helps us to see from different perspectives. It is not something written in the books, it is related to our professional lives, it is about our real life. It’s very useful because it gives us the opportunities to find out and understand new opinions and think about these. It is also possible to know about the others’ points of view.” — Berekia, France

Based on research compiled by a number of international bodies, including the World Economic Forum, the Council of Europe and covered in the British Universities 2018 report on ‘Solving Future Skills challenges’, we have identified the need to provide our English Language students with a unique opportunity to develop key soft skills while improving their competence in English. This will increase their employability in today’s workforce.

**Using a unique syllabus developed in house by Emerald’s Academic expert team, all of our students will now have the opportunity to develop their skills in:**

- Creativity
- Critical Thinking
- Leadership
- Collaboration
- Time Management
- Problem Solving

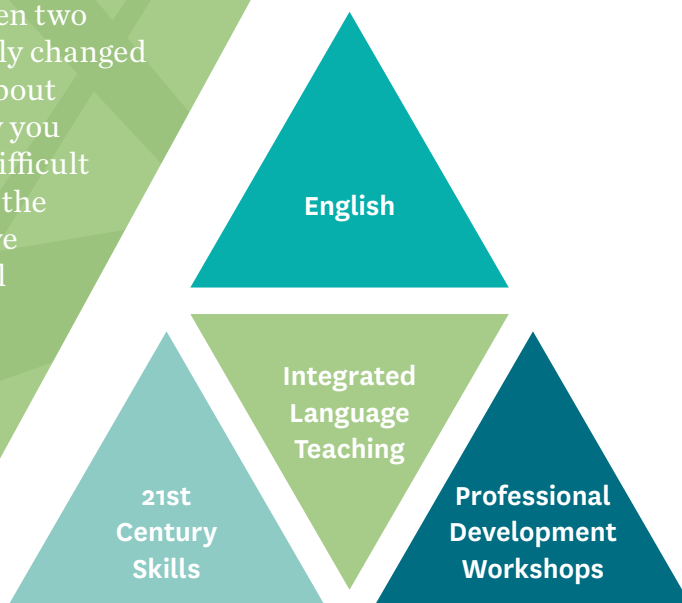
**Professional Development Workshop topics include:**

- Presentations
- Chairing a meeting
- Goal setting
- Networking
- Intercultural Skills

Students from B1 to C1 level will benefit from these exciting modules as part of their Intensive English course at Emerald.

During the General English classes, 16 hours a week will be dedicated to Language Development and 4 hours weekly to sessions covering areas such as Critical or Creative Thinking and 21st-century skills, with a focus on developing general competence in English. Students will be working in international classes, with course participants from many different places worldwide - this too is a great foundation for the 21st-century workplace.

“At the beginning, I thought the critical thinking modules were pointless. But not even two months passed and now I completely changed my mind. Critical thinking is not about being right or wrong, it’s about how you try to solve the task and the most difficult part is doing this in English. But at the end it is worth the effort. I think I’ve been developing new skills that will improve many aspects of my life. The materials will be useful in job interviews but I can see this also helping me with some challenges and adversities in my personal life. This is the characteristic that distinguishes Emerald from other schools.” — Dalila, Brazil



# General Courses

Our General Courses focus on improving students' fluency and accuracy in English and are designed to provide a thorough knowledge of general English at all levels.



[www.eci.ie](http://www.eci.ie)

## Intensive Course

The Intensive Course covers the four basic skills of listening, speaking, reading and writing and is designed to improve communication in spoken and written English. The two class teachers work closely together to provide learner-focused lessons which help build students' confidence, accuracy and fluency.

### At a glance

**Tuition:** 20 X 60 minutes of group tuition per week

**Times:** 09.00-11.00 and 11.20-13.20  
Monday to Friday

**Class size:** Maximum 14, Average 9

**Minimum duration:** 2 weeks

**Age:** 17+

**Starts:** Every Monday

**Levels:** \*Beginner to Advanced  
(\*Fixed Dates for Beginners)



“Last summer I studied in Emerald, it was amazing and one of the best experiences in my life! This year I want to repeat the experience.”

Jose, Student – Spain

---

## Combined Course

Students participating in our Combined Course follow a morning Intensive Course with an additional five hours of individual tuition. The individual afternoon lesson allows participants to concentrate on specific areas of language development and work on a one-to-one basis with the teacher in order to achieve their academic goals.

### At a glance

**Tuition:** 20 X 60 minutes of group tuition  
+ 5 hours of one-to-one tuition

---

**Times:** 09.00-11.00 and 11.20-13.20  
Monday to Friday  
+ 5 hours per week of individual tuition

---

**Class size:** Maximum 14, Average 9

---

**Minimum duration:** 2 weeks

---

**Age:** 17+

---

**Starts:** Every Monday

---

**Levels:** \*Beginner to Advanced  
(\*Fixed Dates for Beginners)

---

## Individual Tuition

This course is tailor-made to suit the individual needs of any student who wishes to work with a private teacher to focus on specific areas of language development. The course content can be agreed in advance of the course following an assessment of the Student Needs' Analysis.

### At a glance

**Tuition:** Up to 6 hours a day of  
individual tuition

---

**Times:** Flexible Timetable

---

**Minimum duration:** 1 week

---

**Age:** 17+

---

**Starts:** On any weekday from  
Monday to Friday

---

**Levels:** Beginner to Advanced

---



# Intensive Plus Courses

---

The Intensive Plus Courses are designed for students who wish to supplement their General English Course with additional specialised classes in small groups.

These courses are ideal for students who want more exposure to the English language and more time with our expert teachers. The materials for the afternoon lessons are carefully researched and specially selected for each programme.



[www.eci.ie](http://www.eci.ie)

## Intensive Plus Speaking Skills

This course is designed to improve students' fluency in English. It allows students to develop their language skills in the morning lessons and put these skills into practice in the afternoon group conversation classes. The smaller conversation classes help to facilitate meaningful discussion within the group. Teachers concentrate on vocabulary building and idiomatic language, leading to more natural English speech.

### At a glance

---

**Tuition:** 26 X 60 minutes of group tuition per week

---

**Times:** 09.00-11.00 and 11.20-13.20

Monday to Friday

14.15-16.15 Tuesday, Wednesday, Thursday

---

**Morning Class size:** Maximum 14, Average 9

---

**Afternoon Class size:** Maximum 9

---

**Minimum duration:** 2 weeks

---

**Age:** 17+

---

**Starts:** Every Monday

---

**Levels:** Pre – Intermediate (A2),  
Intermediate (B1), Upper Intermediate (B2)

---



“Our teachers came from different backgrounds, but they all had a passion to teach and help their students.”

Shunji, Student – Japan

---

## Intensive Plus Business

The Business English course combines the General English programme with afternoon lessons focusing specifically on developing language skills within the context of the world of business. Topics covered include the language of meetings, negotiations and presentations, marketing, sales and advertising and techniques for telephoning and e-communication. The smaller afternoon groups facilitate interaction in realistic business settings.

### At a glance

**Tuition:** 26 X 60 minutes of group tuition per week

---

**Times:** 09.00-11.00 and 11.20-13.20

Monday to Friday

14.15-16.15 Tuesday, Wednesday, Thursday

---

**Morning Class size:** Maximum 14, Average 9

---

**Afternoon Class size:** Maximum 8

---

**Minimum duration:** 2 weeks

---

**Age:** 17+ (morning lessons)

21+ (afternoon lessons)

---

**Starts:** Every Monday

---

**Required Level:** Upper-Intermediate CEFR B2

---

## Intensive Plus EAP

The Intensive Plus English for Academic Purposes course is designed to help students preparing to join an undergraduate or postgraduate programme in an English speaking university. Significant instruction time is dedicated to developing academic English skills. Topics covered include: participating in tutorials and seminars, academic writing skills for essays and reports, examination techniques, academic reading skills and critical thinking.

### At a glance

**Tuition:** 26 X 60 minutes of group tuition per week

---

**Times:** 09.00-11.00 and 11.20-13.20

Monday to Friday

14.15-16.15 Tuesday, Wednesday, Thursday

---

**Morning Class size:** Maximum 14, Average 9

---

**Afternoon Class Size:** Maximum 9

---

**Minimum duration:** 2 weeks

---

**Age:** 17+

---

**Starts:** Fixed Dates

---

**Required Level:** Upper-Intermediate CEFR B2

---



# Examination Courses

We are specialists in preparing students for a wide range of international examinations including Cambridge ESOL, IELTS, TOEIC, TOEFL, TIE and BULATS Examinations.

We are a recognised Cambridge Examination Venue and a preparation centre for Cambridge ESOL and IELTS Examinations. We are also a recognised centre for TOEIC, TIE and Trinity Examinations.



[www.eci.ie](http://www.eci.ie)

## Cambridge Examination Courses

Our Cambridge Examination Courses are taught by expert teachers who have a proven success record in preparing students for the First Certificate, Advanced and Proficiency Examinations. These courses concentrate on developing key examination techniques across all the language skills.

### At a glance

**Tuition:** 20 X 60 minutes of group tuition per week

**Times:** 09.00-11.00 and 11.20-13.20  
Monday to Friday

Simulated Speaking and Listening Test practice outside of scheduled class time

**Class size:** Maximum 14, Average 9

**Course Duration:** 6-12 weeks – see below

**Age:** 17+

**Starts:** Fixed Dates

**Required Levels:** FCE – CEFR B2/CAE – CEFR C1/CPE – CEFR C2



### FCE and CAE Courses

January – March (9 - 11 weeks)

March-June (12 weeks)

July – August (6-8 weeks)

September – December (12 weeks)



---

## IELTS Examination Courses

IELTS is the International English Language Testing System which tests English proficiency across the globe. The IELTS Examination Course focuses on developing key techniques and strategies for the IELTS Examination. Participants complete regular practice tests and are taught how to approach all the sections of the test effectively. Our Academic Team are available to assist with the application process for the IELTS Examination.

### At a glance

**Tuition:** 20 X 60 minutes of group tuition per week

---

**Times:** 09.00-11.00 and 11.20-13.20  
Monday to Friday

---

Simulated Speaking and Listening Test practice outside of scheduled class time

---

**Class size:** Maximum 14, Average 9

---

**Minimum duration:** 2 weeks

---

**Age:** 17+

---

**Starts:** Courses run on an ongoing basis

---

**Levels:** \*IELTS Target Score 5-5.5, IELTS Target 6.0 – 6.5, IELTS Target 7.0+

---

\*Entrance to any IELTS class is subject to an assessment test and a minimum entry level is required for each course.

## Intensive Plus IELTS Preparation

Our Intensive plus Examination programmes combine General English classes in the morning with afternoon classes of exam-specific preparation. The course focuses on the four skills of Listening, Speaking, Reading and Writing and on developing IELTS examination techniques and strategies.

### At a glance

**Tuition:** 26 X 60 minutes of group tuition per week

---

**Times:** 09.00 -11.00 and 11.20 -13.20  
Monday to Friday  
14.15 -16.15 Tuesday, Wednesday and Thursday

---

**Morning Class size:** Maximum 14, Average 9

---

**Afternoon Class size:** Maximum 9

---

**Minimum duration:** 2 weeks

---

**Age:** 17+

---

**Starts:** Courses run on an ongoing basis

---

**Levels:** \*IELTS Target Score 5.0 – 6.0  
IELTS Target 6.5 –7.0+

---

\*Entrance to any IELTS class is subject to an assessment test and a minimum entry level is required for each course.

“Just to let you know that Chloé got an IELTS 7 score, as she needed. We are very happy and we thank you very much for all your kindness and the excellent teaching too.”

Sylvie, Parent – France

# Academic Year Programmes

Our Academic Year Programmes can be structured to suit each individual's requirements and a suitable study path is designed for the student based on the starting level, academic needs and learning objectives.

Flexibility is a key part of the programme allowing students to combine different modules and courses within their Academic Year Programme. All our Academic Year students are monitored regularly throughout their programme by their academic mentor, their class teachers and the Director of Studies.



[www.eci.ie](http://www.eci.ie)

## At a glance

**Tuition:** Choice of 20 or 26-hour programmes or a combination of both

**Duration:** From 25 to 35 weeks

**Age:** 17+

**Starts:** Every Monday

### Levels:

AYP 1: \*Beginner to Advanced

(\*Fixed dates for beginners)

AYP2: Pre-Intermediate to Advanced

AYP 3: Elementary to Advanced

Students of an appropriate language level may incorporate any of our afternoon options into their study programme. Compatible with preparation for IELTS and Cambridge Examinations.

\*Academic Year Programmes may be subject to change as a result of updates to the current Immigration Guidelines and Procedures.

\*Immigration regulations require all non-EU students to undertake a recognised examination at the end of an Academic Year Programme. Recognised Examinations accepted by Immigration include IELTS, Cambridge Examinations and the Test of Interactive English (TIE).



Flexibility is a key part of the Academic Year Programmes allowing students to combine different modules and courses.

## Sample Study Path

Students joining our Academic Year Programme can choose different Intensive (20 hours) or Intensive Plus (26 hours) options within their study path.

Students together with their academic mentor will select the courses that will best help them to achieve their academic goals.

Intensive Course (20 Hours)

Cambridge Examination Course (20 hours)

IELTS Examination Course (20 hours)

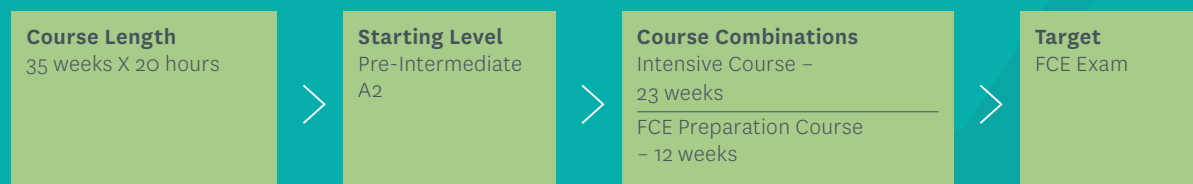
Intensive Plus Speaking Skills (26 hours)

Intensive Plus Business (26 hours)

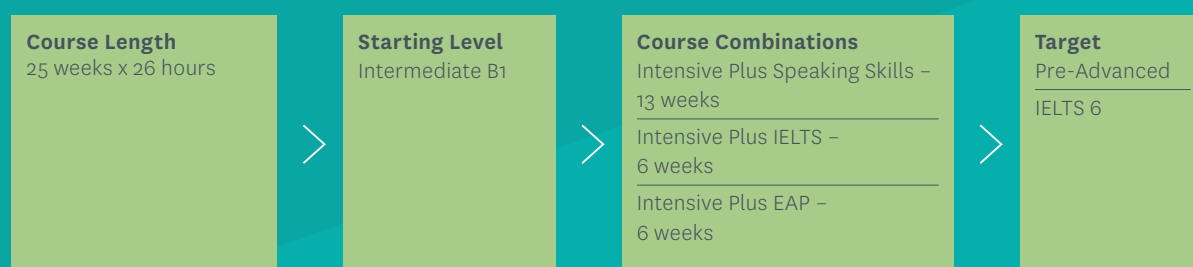
Intensive Plus EAP (26 hours)

Intensive Plus IELTS Preparation (26 hours)

### Academic Year Programme 1:



### Academic Year Programme 2:



### Academic Year Programme 3:



---

## Services For Long-Term Students

### Academic Mentoring:

Every Academic Year student is assigned an Academic mentor for the duration of their programme. The mentor, a senior member of the teaching staff, provides academic guidance, advice and support in order to help students to make the most of their studies.

The mentor works together with students to help them in the following areas:

study planning

---

monitoring progress

---

course options

---

afternoon module choices

---

examination registration & preparation

---

study skills

---

career and further study opportunities

---

### How the Mentoring Programme operates

1. The tutor meets the students in their first week of study to design a study plan and set academic goals.
2. Students have regular scheduled meetings throughout their course with their mentor to review and assess their course objectives.
3. A record is kept of each student's progress, and class teachers provide the mentors with an academic report on each student in advance of the meetings.
4. Students receive regular progress reports and a final report and certificate at the end of their programme.
5. The mentors, teachers and the Director of Studies are always available to assist or consult with students outside of the scheduled meetings.
6. Students can meet and consult with our Academic team to discuss their further study options.

## Unique Emerald Services:

- Academic mentoring system
- Career Guidance and Seminars
- Free Workshops
- Supervised afternoon study sessions
- Free afternoon FCE, CAE and IELTS 'Listening Clubs'
- Free TIE preparation advice and support
- Access to our online services including our blog and magazine and the Emerald Life App

---

## Seminars and Career Guidance

We run a series of informative seminars to help our Academic Year students settle into life in Ireland and make the most of their experience.

### Seminars include:

Living and Working in Ireland

---

CV Preparation & Interview Techniques

---

Immigration Procedures & Registration

---

Further Study Options

---

Completing College Application Forms

---

We provide information and details about pathway and university foundation programmes as well as the different third level options which can be accessed by students. Our Academic team is available to assist students with the application procedures for further study.

## Internship Option

This programme allows students to gain valuable experience in their chosen field working in an English-speaking environment.

Students who wish to add an unpaid internship to their programme should provide a CV and list of their preferred areas for placement.

Non-EU students registering with Immigration for a 25-week programme are eligible for the internship option during their official holiday periods.

For further information on the internship programme please see page 23.

“I have been studying in Emerald Cultural Institute for the past 7 months and all I can say is: wow! I feel so lucky for having chosen Emerald.”

Andrea, Student – Italy



# Specialised and Business Courses

---

Our Specialised and Business courses have been designed for executive clients with unique learning needs. The programmes focus on maximising progress and achieving desired learning objectives in a short time frame.

## Personal Intensive Course

This course is designed for the professional who wishes to concentrate on particular language skills or work on specific areas of English. The course is tailor-made to suit the exact requirements of the client and all participants complete a Needs' Analysis prior to their arrival.

### At a glance

---

**Tuition:** 20, 25 or 30 X 60 minutes of individual tuition per week

---

**Times:** From 4 to a maximum of 6 hours per day Monday to Friday

---

**Minimum duration:** 1 week

---

**Age:** 21+

---

**Starts:** Every Monday

---



[www.eci.ie](http://www.eci.ie)

“The experience I had in Emerald was beautiful and in particular I found the business course at your institute very interesting and of high quality.”

Mauro, Lawyer – Italy

---

## Mini-Group for Executives and Professionals

This intensive mini-group course is designed for executives and professionals who require knowledge of English for their work and who wish to increase their language and communication skills. The maximum class size is six and participants can choose to combine this programme with individual lessons in the afternoons. The content of the courses includes simulated discussions and business meetings, telephone conversations, negotiations, report writing, problem solving and role plays. Lunch with a tutor can be added at an additional cost.

### At a glance

---

**Tuition:** 20 X 60 minutes of small group tuition per week

---

**Times:** 09.00-11.00 and 11.20-13.20 Monday to Friday

---

**Class size:** Maximum 6, Average 3

---

**Duration:** 1 week

---

**Age:** 21+

---

**Starts:** \*On Fixed Dates.

---

**Language Level required:** CEFR B2

---

\*A minimum number of 2 participants is required.

## Intensive Combined Course

This course offers a combination of group and individual classes and makes full use of the limited time available during a short stay. Clients study in our general international group classes in the morning and can use their individual hours of tuition to concentrate on specific areas of interest.

### At a glance

---

**Tuition:** 20 X 60 minutes of group tuition + 10 hours of individual tuition

---

**Times:** 09.00-11.00 and 11.20-13.20 and 14.15 -16.15 Monday to Friday

---

**Class size:** Maximum 14, Average 9

---

**Minimum duration:** 1 week

---

**Age:** 17+ ( Morning Lessons) 21+ ( Afternoon Lessons)

---

**Starts:** Every Monday

---

**Levels:** \*Beginner to Advanced  
(\*Fixed Dates for Beginners)

---



---

## Professional Development Programmes

This tailor-made programme is available for professional groups only and offers participants a combination of General English tuition with training for their specific professions in the afternoons. Our full-time staff is complemented by experts from the professional Irish scene who are invited to lecture in the institute. We can organise visits to Irish companies in some cases.

The professions for which this course is available include: Law, Medicine, Military, Information Technology, Engineering, Banking, Finance, Journalism, Management, Aviation, Green Economy and Tourism.

The timetable and content of the course are designed to match clients' needs and programmes are tailor-made to meet the group's exact requirements.

“I must say that my stay was flawless. The course was extremely well organised. My teachers were professional but with a sense of humour, with deep knowledge of the subject and passion for the language – I simply couldn't ask for better teachers” — Ksenia, Russia





# Internship Programme

The internship programme guarantees an initial study period at the Emerald Cultural Institute followed by an unpaid placement in a company.

This programme allows students to gain valuable experience in their chosen field working in an English-speaking environment.

Our internship is also an ideal option for students studying with us for an academic year who want to improve future career prospects by gaining valuable experience to include on a CV.

The Emerald Cultural Institute cooperates with our partner organisations who are specialised in the area of recruitment. We provide course participants with a range of internship possibilities including placements in the following sectors; Accounting, Administration, Architecture, Audiovisual, Beautician, Preschool Education, Engineering (Limited places – 6 months or more), Environmental, Digital Media Marketing, Food & Beverage, Hairdressing, Hotels, Horticulture, Human Resources, Information Technology, Journalism, Landscaping, Law (Limited places – 3 months or more), Logistics, Marketing, Mechanics, Non Profit Organisations, Publishing, Retail, Sales, Sound Engineering, Telecommunications, Tourism.

## At a glance

**Minimum duration:** 4-week language course and 6-8 week internship

**Age:** 18+

Eight weeks' notice required prior to start of internship

The company will decide on the work schedule

Availability of placements may vary according to the sector



[www.eci.ie](http://www.eci.ie)



# Courses for Teachers

These practical courses have been specifically designed for non-native teachers of English at primary and secondary-school level or for teachers who would like to use CLIL (Content and Language Integrated Learning).

The courses were developed within the Erasmus+ framework.



[www.eci.ie](http://www.eci.ie)

## At a glance

**Tuition:** 25 X 60 minutes per week including lessons, seminars and cultural activities

**Times:** 09.00–11.00 and 11.20–13.20 Monday to Friday  
Afternoon seminars and cultural programme provided on designated afternoons and evenings

**Class size:** Maximum 15

**Minimum number:** A minimum number of participants is required

**Minimum duration:** Two weeks

**Starts:** On Fixed Dates and on request for Closed Groups outside these dates



---

## Modern Methodology & Language Development for Primary Teachers of English

This course provides language-development classes and methodology modules focusing on the teaching of English in the primary classroom and on the needs of young learners. The main focus is on practical ideas and materials' development. Modules include: Songs and Games in the Language Classroom; Drama and Role-Play; Tasks and Activities for Language Learning; English Across the Curriculum; Developing Listening and Speaking Skills; Internet Resources for Language Teachers. Practical workshops focus on helping participants to devise materials and lessons for their own teaching situations. A minimum language level of CEFR B1 is required for this programme.

## Introduction to CLIL: Theory & Practice (with Language Development option)

This course is for teachers who are new to, or have recently begun teaching CLIL. It is a practical introduction to the CLIL approach for all secondary teachers and primary teachers of pupils aged 10+. The course combines lectures and practical workshops and it presents the key concepts in CLIL, using a selection of practical activities for various subjects at late primary and secondary level. The course is available as a two week CLIL & Language Development option. A minimum English language level of CEFR B2 is required for CLIL programmes.

## Modern Methodology & Language Development for Secondary Teachers of English

This course focuses on the teaching of English in the secondary-school classroom. Different learning theories and their applications are presented and practical modules include: Teaching the Four Skills; Use of Authentic Materials; Tasks and Activities for Language Learning; Drama and Role-Play in the Language Classroom. Participants are also given the opportunity to improve their confidence and competence in English by means of language development classes. We provide afternoon seminars in Education and in Irish Culture. A minimum language level of Upper Intermediate (CEFR B2) is required for this programme.

**Erasmus+ Funding:** Qualifying participants on previous Emerald Teacher-Training courses have been funded by the Erasmus Plus programme. If you are a qualifying teacher, please contact your National Agency for more details. All applications need to be made through your school or institution.



# Your Experience

## **The Dublin Centres**

Palmerston Park 28

Merrion Square 32

Gallery 36

Accommodation 42

General Information 46

Location 47



# Palmerston Park

---

Our Palmerston Park School is located in a prime residential neighbourhood within easy reach of Dublin city centre yet close to both our host families and student accommodation.

“Start, Palmerston Park!”

Ulysses, James Joyce



Our Palmerston Park School is set in its own landscaped gardens overlooking the beautiful Palmerston Park. It offers students the chance to study English in a peaceful and stress-free environment with the city centre only a six-minute tram journey away. The original school building is a gracious Victorian mansion and we have enriched the campus by adding a specially designed modern building with additional classrooms and a large serviced canteen.



Our centres are equipped with excellent facilities to enhance the learning experience of every student.



YOUR EXPERIENCE



# 22

modern  
classrooms

## Facilities and features Include

- Twenty-two modern classrooms
- Interactive technology
- Multi-media centre
- WiFi access throughout the campus
- Internet and e-mail facilities
- Reading room and study space
- Self-access library
- Private landscaped garden with covered seating areas
- Large serviced restaurant and coffee bar
- Located in a prime residential neighbourhood within easy reach of Dublin city centre







## 2 & 3 Merrion Square

---

Our city centre year-round school is located in two elegant Georgian buildings in the impressive Merrion Square just a few minutes' walk from the renowned Trinity College and the pedestrianised shopping district of Grafton Street.



“Merrion Sq is the most prestigious and, arguably, the most elegant of Dublin’s Georgian squares. Its well-kept lawns and tended flower beds are flanked on three sides by gorgeous Georgian houses with colourful doors, peacock fanlights, ornate door knockers”  
— Lonely Planet



Oscar Wilde Statue, Merrion Square, Dublin



Merrion Square is home to some of Ireland’s best Georgian architecture, surrounded on three sides by impressive Georgian townhouses with the fourth side containing Government Buildings, the Natural History Museum, Leinster House (Parliament building) and the National Gallery of Ireland.

Incorporating modern facilities within the magnificent classical architecture of the Georgian period, this school offers the advantages of a city-centre location within a unique setting overlooking the beautiful gardens of Merrion Square.



**Facilities and features include:**

- 18 innovative training and executive learning spaces
- Internet and email facilities
- Wifi access throughout the campus
- Interactive technologies
- Self-access library and study space
- Breakout and relaxation areas for students
- Prestigious city centre location next door to the childhood home of Oscar Wilde
- Overlooking the beautiful Merrion Square
- Short walk to many popular cafés, restaurants and bars with a wide range of shops and exciting tourist attractions on your doorstep





18


innovative training  
and executive  
learning spaces



Discover Ireland and explore its renowned scenic areas such as Clare, Cork, Galway, Kerry and Sligo.



The Cliffs of Moher, County Clare



Experience the  
world-famous  
Irish welcome.

Trinity College Library, Dublin





Trinity College, Dublin



Merrion Square, Dublin

Get to know the elegant neighbourhoods around our schools in Palmerston Park and Merrion Square.



Dún Laoghaire

Explore the attractions  
around Dublin's city  
and coastline.



National Gallery, Dublin City Centre



Dublin City Centre

# Accommodation

---

Students attending courses at the Emerald Cultural Institute can choose from a wide range of high-quality accommodation options.

## Residential Accommodation

We offer residential accommodation on university or college campuses. The type of residential accommodation can vary, from apartments to single or twin rooms with shared facilities.

### Marino Institute of Education

The student residence in Marino can accommodate over 300 students in modern self-catering apartments (available during the summer months).

#### Facilities include:

- Single bedrooms with en suite toilet/ shower
- Study facilities in each bedroom
- Self-catering facilities with fully-equipped kitchen and a comfortable living area
- On-campus laundry facilities
- WiFi access throughout the campus
- Landscaped gardens and grounds
- On-campus restaurant and coffee shop
- Gated complex with on-site security

### Trinity Halls of Residence

Situated in the quiet residential neighbourhood of Dartry, Dublin, it is an official residence of Trinity College (available during the summer months).

#### Facilities include:

- Single and twin ensuite bedrooms
- Study facilities in each bedroom
- Fully-fitted kitchen and living areas
- Secure key card access to each bedroom and apartment
- On-site coin operated self-service laundry facilities

### St. Raphaela's Residence

Our year-round residence offers single and twin room accommodation for adult students on a self-catering basis.

#### Facilities include:

- Single or twin room accommodation with shared facilities
- Self-catering facilities
- WiFi access
- Spacious lounge and common room
- Convenient tram and bus routes to Merrion Square and Palmerston Park
- Laundry Facilities



## Alexandra College Residence

At our Alexandra College female residence we offer a choice of single and shared bedrooms that are finished to the highest standards with on-site security and CCTV. It is in a unique location within the grounds of the prestigious Alexandra College, a short walk from our Palmerston Park School. The Milltown LUAS (tram) stop is at the gates of Alexandra College and the journey by tram from Milltown into the Stephen's Green LUAS stop takes approximately 7 minutes, offering easy access to our Merrion Square School.

### Facilities include:

Comfortable single and twin bedrooms

On-site security and CCTV

Excellent transport links including tram and bus routes

Free WiFi access

Bicycle racks and limited car parking

Close to supermarkets, shops, restaurants and pharmacy.

Shared bathroom facilities

Communal kitchen



St. Raphaela's Residence

## Host Family

Staying with a host family gives students an excellent opportunity to develop their language skills in a natural, everyday context. The host family experience is one of the best ways in which students can learn about the lifestyle and culture of the location they are studying in and encounter Irish hospitality first-hand.

Carefully selected host families

Half-board accommodation for adults with full-board at the weekends

Regular monitoring and feedback on host families

## Guesthouses, Hotels and Self-Catering Apartments

Students can choose from a wide range of alternative accommodation options all within easy reach of our study centres. We can offer special rates in guesthouses, hotels or corporate self-catering apartments.



St. Raphaela's Residence



Marino Institute of Education

“I want to mention my host mother Joan. She is a perfect person, who supported me, shared interesting thoughts and ideas, and introduced me to Irish culture. It helped me feel very comfortable, like at home.”

Nina, Student - Russia





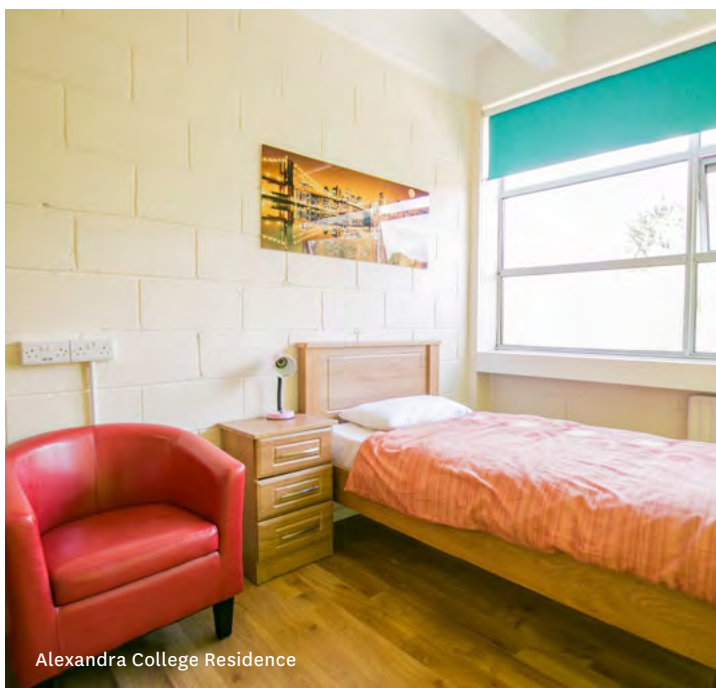
Marino Institute of Education



Marino Institute of Education



Alexandra College Residence



Alexandra College Residence



St. Raphaela's Residence



St. Raphaela's Residence

YOUR EXPERIENCE

# General Information

---



## Visa and Immigration Guidelines

All non-EU students should check with their nearest Embassy or Consulate to verify if they require a visa to study in Ireland or refer to the Irish Naturalisation and Immigration Service (INIS) website [www.inis.gov.ie](http://www.inis.gov.ie) for full details of the online application procedure.

It is the responsibility of enrolling students to provide documentation in accordance with the appropriate visa procedures as advised by the Irish Naturalisation and Immigration Service ([www.inis.gov.ie](http://www.inis.gov.ie)) and/or the appropriate Irish embassy or consulate.

It is a requirement for all non-EEA and non-EU students who intend staying for more than 90 days to register with the Garda National Immigration Bureau (GNIB). Registration needs to be completed within 30 days of arrival to Ireland. The Student Welfare Officer will assist the student with the required documentation and procedures. Students staying for more than 90 days should pay a deposit to the school for a recognised English examination to be taken before the end of their course.

## Medical and Travel Insurance

All students studying in Ireland must obtain appropriate medical insurance in their own country before departure and students are also advised to take out travel insurance to cover accident or loss of baggage. Medical Insurance can be arranged for non-EU students by the institute on request. Please check our Terms & Conditions for medical insurance requirements for Non-EU students.

Students travelling to Ireland from EU countries must bring their European Health Insurance Card with them. Non-EU students who require a visa to study in Ireland will need to submit full details of their medical insurance policy to the immigration bureau when registering with the GNIB and they are required to have adequate medical insurance valid for their entire stay in Ireland. The policy should be submitted in English or accompanied by an English translation.

## Personal Insurance

Students are not insured by the school or by the host family against injury, illness, theft or loss of personal effects and the school accepts no responsibility in the event of such occurrences. Personal insurance cover is therefore recommended.

## School Holidays

In the case of public holidays which occur on a Monday students will begin their course on the Tuesday of that week. Public Holidays are non-refundable.

## Terms and Conditions

For a full list of our terms and conditions please refer to our Price List.



[www.eci.ie](http://www.eci.ie)



# Location

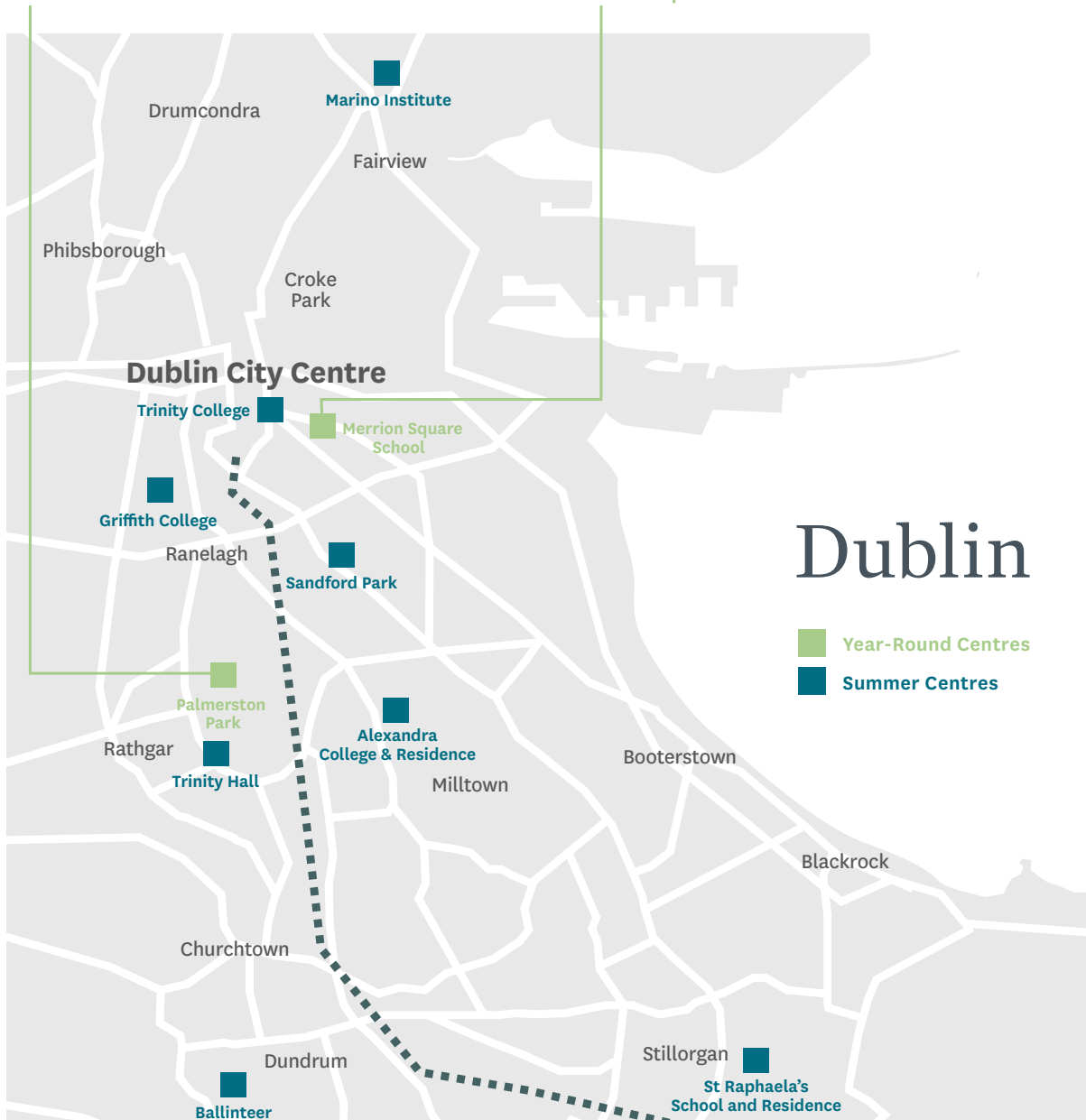
## Dublin



Palmerston Park



Merrion Square



# Dublin

- Year-Round Centres
- Summer Centres



# Your Needs, Our Experience



[www.eci.ie](http://www.eci.ie)



**Emerald-Cultural-Institute-Official**



**emeraldulturalinstitute**

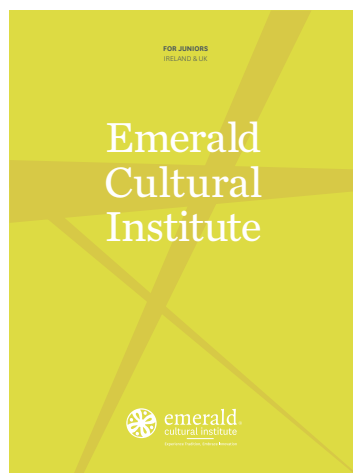
## Central Bookings Office:

Emerald Cultural Institute  
10 Palmerston Park  
Rathgar, Dublin  
D06 H9X8  
Ireland

t +353 1 4973361  
f +353 1 4975008  
e [emerald@eci.ie](mailto:emerald@eci.ie)

[www.eci.ie](http://www.eci.ie)

## Junior Brochure



Learn more about our  
Junior Courses for  
Students aged 11-17.

The Emerald Cultural Institute is a school recognised  
by Quality and Qualifications Ireland for English  
Language Teaching.







emerald<sup>®</sup>  
cultural institute

Experience Tradition, Embrace Innovation

Emerald Cultural Institute  
10 Palmerston Park  
Rathgar, Dublin  
Do6 H9X8  
Ireland  
t +353 1 4973361  
f +353 1 4975008  
e [emerald@eci.ie](mailto:emerald@eci.ie)  
[www.eci.ie](http://www.eci.ie)